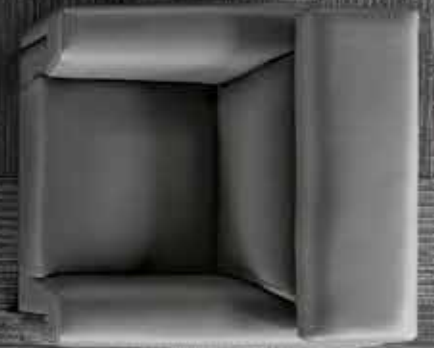


tile



DESIGN IS PERCEPTION



no rules collection

shaw contract group®





REVERSE TILE



DIRECTION TILE

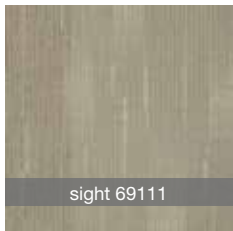


SHAPE TILE

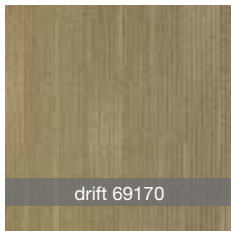
FORM A NEW POINT OF VIEW

Positive and negative spaces take organic shape. Bold, energetic lines form optical texture in tile and broadloom.

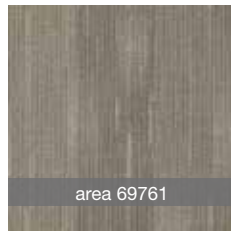
shown in direction



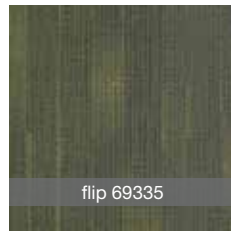
sight 69111



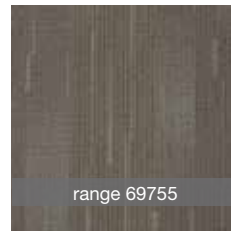
drift 69170



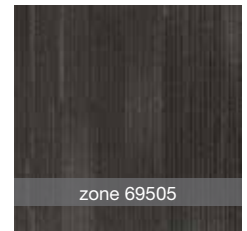
area 69761



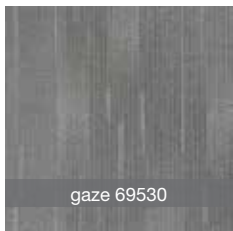
flip 69335



range 69755



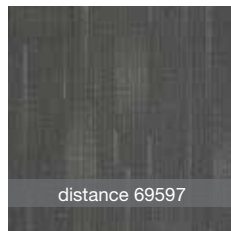
zone 69505



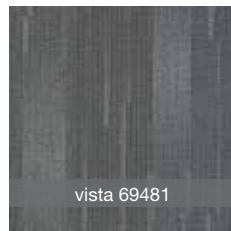
gaze 69530



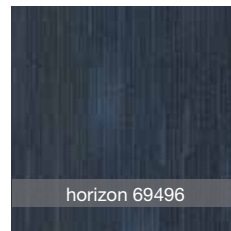
outlook 69557



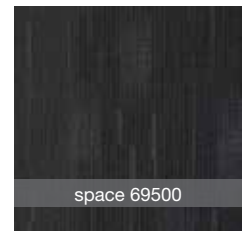
distance 69597



vista 69481



horizon 69496



space 69500

no rules
it's time to break the rules.

The rules say you have to put down your carpet in a certain pattern. No Rules sees things differently. This quick ship cradle-to-cradle collection is designed to let you mix dye lots imperceptibly and install tiles randomly. So lose the attic stock, and express your rebel view.

EYEING A TIGHT SCHEDULE?

quick ship

Looks like you're in luck. Place your order for up to 2,500 yards of tile, and upon confirmation, we'll ship to your door in two weeks or less. Now that's what we call a design rush. To see other quick ship designs visit shawcontractgroup.com.

product specifications

Tile
Face weight: reverse: 20 oz
direction: 20 oz
shape: 20 oz
Fiber: Eco Solution Q®
Backing: EcoWorx®



shaw contract group®

For more information on **View** contact your local Shaw Contract Group representative, visit us at www.shawcontractgroup.com or call 877-502-SHAW.

© 2013 Shaw, a Berkshire Hathaway Company

broadloom specifications

style name	transfer
style number	5A203
construction	multi-level pattern loop
fiber	eco solution q® nylon
dye method	100% solution dyed

	english	metric

pattern repeat	14.4 w x 14.4 l	14.4 w x 14.4 l
tufted weight	20.0	678.11 g/m ²
gauge	1/10	39.37 per 10 cm
stitches per inch	11	43.31 per 10 cm
finished pile thickness	0.143	3.63 mm
total thickness	0.270	6.86 mm
average density	5035	9.38 kilotex
product size	12 foot	3.66 m
primary backing	synthetic	
secondary backing	classicbac®	
protective treatments	ssp® shaw soil protection	

testing

radiant panel	Class I
nbs smoke	less than 450
electrostatic propensity	less than 3.5 kv

warranties

10 year commercial limited

installation method

direct glue

coordinating products

modify, switch, reverse tile, shape tile, direction tile

environmental certification

nsf140 gold
cradle to cradle silver certified



Specifications are subject to nominal manufacturing variances. Material supply and/or manufacturing processes may necessitate changes without notice.

eco impacts

end of life

recyclability

100% Recyclable

shaw closed looped recycling

40.5%

To recycle call 800.509.SHAW

materials

ingredients

face fiber

Nylon 6

dye method

100% Solution Dyed

backing

Polymer Emulsion

surface treatments

Non C8 Fluorocarbon Chemistry

does not contain PVC, phthalates, or PBD/PBDE

recycled content

total recycled content (by weight)

15.8 %

pre-consumer

7.0 %

post-consumer

8.8 %

bio-based/rapidly renewable content (by weight)

0.0 %

packaging

100% recyclable

country of origin (manufacturer)

USA

Meets or exceeds all local and national regulations in country of manufacture.

Manufactured in an ISO9001 & ISO14001 certified facility or equivalent.

Recycled content is calculated using system allocation, mass balance, and direct insertion.

The actual recycled content in this product will likely vary. For more information email

info@shawgreenedge.com.

third party certifications

MBDC cradle to cradle

Silver Certified

NSF 140

Gold Certified

CRI green label plus

Certified GLP8472

USGBC LEED

Contributes

social responsibility

Shaw and our people provide financial support, volunteer service and leadership for charitable and civic organizations in the communities where we work and live. Additionally, we strive to adhere to all applicable laws regarding labor, discrimination and harassment, wages and benefits, health and safety, diversity and equal opportunity.

Sustainability Through Innovation™ That's the Shaw Green Edge®